



# FIGTREE HIGH SCHOOL

## PARENT BULLETIN

Term 1 Week 6, 3 March 2017

Address: 2 Gibsons Road, Figtree NSW 2525

Phone: 02 4271 2787

Email: figtree-h.school@det.nsw.edu.au

Fax: 02 4271 6626

T1 Week 7	Week Starting 6 February
Monday 6/3/17	Year 12 - Work Placement - Metals Year 11 - Business Studies Task Year 11 - Peer Support Year 10 - History Task Year 10 - Peer Support Year 8 - Science Student Research Project Year 7 - Peer Support
Tuesday 7/3/17	Year 12 - Work Placement - Metals Year 12 - Visual Arts, Art Express - Sydney Year 11 - Visual Arts, Art Express - Sydney Regional Swimming, Dapto Pool
Wednesday 8/3/17	Year 12 - Work Placement - Metals Defence Force Recruiting info session
Thursday 9/3/17	Year 12 - Work Placement - Metals Year 12 - Excursion. Commerce/Legal studies Downing Street Court, Sydney Year 11 - Physics Task Year 10 - Excursion. Commerce/Legal studies Downing Street Court, Sydney
Friday 10/3/17	Year 12 - Work Placement - Metals Year 11 - Modern History Task Year 11 - Physics Task Year 11 - Senior Science Assessment Task Year 10 - PASS Excursion. Flipout Year 9 - PASS Excursion. Flipout AIME Morning Tea
T1 Week 8	Week Starting 13 February
Monday 13/3/17	Year 12 - English Assessment Task. Creative Writing Year 11 - Peer Support Year 10 - Peer Support Year 10 - English Assessment Task. Creative Writing Year 9 - Excursion. PAS3 Aces Tennis Year 7 - Peer Support Excursion - U18's Touch Football. Parrish Park Northern Zone Touch Trials
Tuesday 14/3/17	Year 10 - Excursion. Geography, Warilla Year 12 - English Assessment Task. Creative Writing Open Boys Soccer V's Bulli HS. Bulli Park
Wednesday 15/3/17	
Thursday 16/3/17	Year 12 - Interview Day Year 11 - Excursion. Geography Mandatory Year 7 - Meet and Greet. 3:30-4:30pm
Friday 17/3/17	Year 12 - Interview Day Figtree Heights PS Cross Country. FHS Oval
T1 Week 9	Week Starting 20 February
Monday 20/3/17	Year 12 - Music HSC Encore Performances Year 11 - Music HSC Encore Performances Year 10 - Music HSC Encore Performances Year 10 - Geography Task Year 9 - Music HSC Encore Performances Year 7 - Camp, Teen Ranch

Tuesday 21/3/17	Year 11 - Aboriginal Studies Assessment Task Year 9 - History Task Year 7 - Camp, Teen Ranch
Wednesday 22/3/17	Year 11 - Biology Assessment Task due Year 7 - Camp, Teen Ranch P & C Meeting - 6.30pm-8.00pm
Thursday 23/3/17	Year 10 - Drama. Poetry in Action Year 9 - English. Poetry in Action
Friday 24/3/17	Year 11 - Ancient History Task Year 10 - PASS Excursion. Flipout Year 9 - PASS Excursion. Flipout Motivational Media
T1 Week 10	Week Starting 27 February
Monday 27/3/17	Year 12 - Mid-Course Examination Year 9 - Excursion. PAS3 Aces Tennis
Tuesday 28/3/17	Year 12 - Mid-Course Examination Year 11 - SAC Task Year 11 - Modern History Task
Wednesday 29/3/17	Year 12 - Mid-Course Examination
Thursday 30/3/17	Year 12 - Mid-Course Examination
Friday 31/3/17	Year 12 - Mid-Course Examination Year 11 - Peer Support Year 10 - Peer Support Year 7 - Peer Support
Year 12 Purple Year 11 Olive Year 10 Blue Year 9 Red Year 8 Green Year 7 Orange	



### Thoughts from the Principal

Welcome to our mid-term edition of Figtree High School news.

So much has happened in recent weeks. Our students are settled and we have a strong focus on learning, from Year 7-12.

Many of our students participated with enthusiasm at our annual Swimming Carnival on one of the hottest days of Summer. As a result, we had excellent representation at the Zone Carnival last week. Student representation at several sports is very high for coming team trials and we look forward to hearing of their success.

Our new Admin space is open and is hosting some beautiful artworks curated by our CAPA Committee of students. Other Arts news spotlights Bailey Craft who was selected to play saxophone in the Illawarra South East Performing Ensemble.

Year 11 students were inspired and challenged at their recent camp and we thank staff who assisted at this excursion. Year 7 will be on their camp in the not too distant future.

We have enjoyed showcasing our fabulous school at Expo Night this week. Our staff and student commitment to ensuring future students and their families are shown the full extent of what this wonderful school has to offer is recognised and valued.

Finally, in this edition of our newsletter, I would like to make special mention of Mrs Sharyn Low. Mrs Low has been our P&C President for the past four years and has recently tendered her resignation. The Figtree High School community sincerely thanks Mrs Low for her commitment to improvements for the students at our school. We wish her well in future endeavours. Our P&C meets on the fourth Wednesday of each month at 6:30pm – new members are always welcome.

Enjoy reading about the achievements of your children.

Mrs Karen Burke

Principal

## PBL Core Values

<b>WEEK 7:</b>	<b>Safety</b> Play approved games only in the playground
<b>WEEK 8:</b>	<b>Learning</b> Move quickly back to the classroom at the end of the break
<b>WEEK 9:</b>	<b>Respect</b> Be at the canteen only to buy for yourself
<b>WEEK 10:</b>	<b>Respect</b> Put rubbish in the bins

## Deputy Principal

### Why Does Attendance Matter?

Australian research shows that attendance matters for achievement. The more a young person misses school, the more difficult it is to achieve expected academic performance.

Regular attendance not only improves academic results, but enables students to develop a sense of belonging to a peer group and assists in building important coping and friendship skills. Confident and resilient students are more likely to engage in correct social behaviour.

Regular attendance relieves stress and makes school easier.

Figtree High School has lots of support to assist students in the form of School Counsellors, Year Advisers, the Wellbeing Team and Careers Adviser.

Please explain all absences within seven days. This can be done by responding to SMS, by phone, note or in person. Under the Education Act 1990, all absences must be explained within seven days. If you do not explain why your child has been absent within seven days, it will be recorded as an unjustified absence and this will appear on your child's report.

If you are not receiving a SMS when your child is away could you please notify the school and update your details.

### Year 7 Meet and Greet

Year 7 students and their parents/carers are invited to attend a 'Meet and Greet' afternoon on Thursday 16 March, 2017 at 3:30pm to 4:30pm. There will be an invitation given to each student to take home. This is an opportunity for parents and carers to meet their children's teachers in an informal setting. The Head teacher Wellbeing will also be present if parents have any questions about the upcoming camp. There will be a sausage sizzle provided for students. Year 7 Interim reports will be issued in Week 8.

### Year 11 Camp

Year 11 students attended a camp at Stanwell Tops on Monday 6 March to Wednesday 8 March 2017. The students participated in seminars and forums on a range of topics including future directions, goal setting,

time management, study skills and planning, legal advice on appropriate social media use as well as a session on where to seek assistance and mindfulness. The sessions were presented by Mrs Karen Burke (Principal), Mrs Vanessa Glasgow (HT Teacher and Learning), Mr Adam Sargent-Wilson (Careers Adviser), Legal Aid and Headspace.

The students participated in a range of physical and mental challenges that assisted to build resilience and team building skills. The activities ranged from the giant swing and abseiling to dodgems.

Students were engaged throughout the three days and their behaviour was excellent. The lessons learnt will not only assist them in the next two years but in all of their future endeavours. A big thank you to Mrs Trish Dive and Mr Peter Simmonds who organised and attended the camp, Mrs Vanessa Glasgow, Mr Adam Sargent-Wilson, Mr Gary Smith and Ms Abbey Munro who attended and supervised students over the three days.

Year 11 Interim reports will be issued in Week 7.

---

### ***Faculty Report - Mathematics***

---

This year the Mathematics faculty are excited to have three collaborative classrooms where students have the opportunity to work with others to solve problems and learn through investigation. In these rooms, the students complete the work on whiteboards to show their development of their answer through collaboration and guidance from the teacher. This is a visible workspace where the teacher can quickly see and then help groups of students that are having difficulties. These classrooms are the result of university research to foster engagement and in creating a thinking classroom.

**Australian Mathematics Competition 2017** – will be run on Thursday 27 July 2017. All students are encouraged to enter and there are three sections, Junior (Years 7 & 8), Intermediate (Years 9 & 10) and Senior (Years 11 & 12). The cost is \$6.50 per student. Payment of the entry fee is to be made at the office. All classes will be told more about this competition at the start of Term 2.

**Stage 4 Mathematics Enrichment class 2017.** This will be the third year we have run this enrichment class. The selected students enter an enrichment competition that runs for 16 weeks in terms 2 and 3 where they work through set problems independently. During term four they work in a collaborative environment to solve challenging problems. The students selected are from Years 7 and 8. Eight high achieving students from each year will be invited to join this class. The students will be selected on their class results, NAPLAN results and teacher recommendation. Invitations to join this class will be sent out early in term two.

All years are working on their program of study and formal assessments will start to occur. Students should know when their assessment task is on and have completed independent home study. Any student unsure of how to study at home should talk to their teacher for guidance. Students are reminded that they need to be equipped for their lessons by bringing their correct books and pens to school. Also, Years 8-12 need to have their calculator with them for every Maths lesson. We have calculators for sale at the school for \$22, payment can be made at the office and then the calculator can be collected at the Maths faculty.

***Ms Sharon Kachovich***

Head Teacher Mathematics (Relieving)

## **Meningococcal School-based Vaccination Program in 2017**

The NSW Minister for Health has today announced the start of a school-based meningococcal vaccination program targeting Year 11 and 12 students in Term 2 2017.

Meningococcal W has emerged as a significant cause of invasive meningococcal disease with the number of cases almost tripling in NSW in 2016 compared to 2015. Meningococcal disease is a rare but serious illness that can present as meningitis (inflammation of the lining of the brain and spinal cord) or septicaemia (blood poisoning) and may be caused by one of several serogroups (or types), including A, B, C, W and Y. Use of meningococcal C vaccine on the National Immunisation Program has almost eradicated meningococcal C disease in Australia.

Evidence from Australia and overseas suggest that meningococcal disease caused by serotype W is significantly more severe than the other serotypes currently circulating in Australia.

More information about meningococcal disease is available here:

[www.health.nsw.gov.au/Infectious/factsheets/Pages/Meningococcal\\_disease.aspx](http://www.health.nsw.gov.au/Infectious/factsheets/Pages/Meningococcal_disease.aspx).

The vaccination program will target and protect Year 11 and 12 students based on national expert advice that older adolescents have a greater risk of carrying and transmitting meningococcal disease and that school-based vaccination programs are the most effective way of achieving high vaccine uptake in this group. The vaccine is given as a single dose, protects against serotypes A, C, W and Y and has been shown to be both safe and effective.

The Meningococcal W Response Program for students in Years 11 and 12 will run alongside the routine Year 7 vaccination program, with some modification. The second dose of human papillomavirus (HPV) vaccine normally given to Year 7 students in Term 2 will be deferred, which will allow school immunisation teams to commence the Year 11 and 12 Meningococcal W Vaccination Program from 1 May 2017 at that Term 2 slot instead. There is no harm for Year 7 students in delaying the second dose of the HPV vaccine.

Further consideration will be given to completion of the HPV course for Year 7 students, and correspondence about these arrangements will be made to parents and schools as soon as possible. In determining this schedule, NSW Health has been working with education authorities in the Government, Catholic and Independent sectors so as to minimise disruption to schools and senior students.

Your local Public Health Unit (available on 1300 066 055) will shortly be contacting your school to make arrangements to offer meningococcal vaccination to Year 11 and 12 students, including confirming clinic times and the distribution and collection of consent materials. Your support is greatly appreciated and will

help maintain the health and well-being of your students and the broader community.

## **NSW SCHOOL VACCINATION PROGRAM (amended) - 2017**

Each year NSW Health works in partnership with schools to offer the vaccines recommended by the National Health and Medical Research Council (NHMRC) for adolescents as part of the school vaccination program.

In 2017 the following vaccines will be offered to Year 7 students\*:

- dTpa vaccine (Diphtheria, Tetanus & Pertussis (whooping cough)) as a single dose
- varicella vaccine (chickenpox) as a single dose; and
- human papillomavirus (HPV) vaccine in a 2-dose schedule. (students who commence HPV vaccination in Year 7 but do not complete the course may be offered catch-up doses at school in Year 8).

### **Vaccination Schedule**

#### **VISIT 1: 27/2/17**

##### **Year 7 students (boys & girls)**

- Human Papillomavirus vaccine (HPV) **dose 1** (2 dose course)
- Diphtheria/Tetanus/Pertussis booster vaccine (single dose)

#### **VISIT 2: 6/11/17**

##### **Year 7 students**

- Human Papillomavirus vaccine (HPV) **dose 2**
- Varicella (Chicken pox) vaccine (single dose) catch-up only. Not required if student has had the disease or have received 1 dose as a child.
- Catch up for HPV, dTpa and varicella will be provided to students in Yr7 if vaccines missed at previous visits

**\*At each clinic held in 2017 catch up HPV vaccination will be offered to Year 8 students who commenced but failed to complete the course of HPV in 2016.**

\* *The Parent Information Kits contain a consent form, information sheet and privacy statement that details how personal information will be collected, stored and utilised.*

Parent Information Kits have been sent home to parents/guardians. To consent to the vaccination of their child, parents/guardians are advised to:

- read all the information provided
- complete the consent form, including signing their name next to the vaccine/s they would like their child to receive
- return the completed consent form to their child's school
- ensure that their child eats breakfast on the day of the school vaccination clinic.

Parents/guardians who wish to withdraw their consent for any reason may do so by writing to the school Principal or phoning the school. The Procedure for Withdrawal of Consent is available on the NSW Health website at [www.health.nsw.gov.au/immunisation](http://www.health.nsw.gov.au/immunisation).

To improve vaccination completion, students will be opportunistically offered any missed doses throughout the year where possible.

Please note that for HPV vaccine only, parents/guardians must record their Medicare Number (all 10 digits and the 11<sup>th</sup> number beside the child's name) on the consent form, as this is required to record the student's information on the National HPV Vaccination Register and (for female students only) link to the National or State Cervical Screening Program.

**A Record of Vaccination will be provided to each student vaccinated at each clinic. Parents/guardians should ensure that this record is kept for future reference and should not assume that their child has been vaccinated if they do not receive this Record of Vaccination.**

**K. Borst (Coordinator)**

## Stage 6 Science Study Afternoons

In the lead up to Year 12 exams and the first assessment tasks for Year 11, the Science faculty is offering extra support to our Year 11 and 12 students on Monday and Tuesday afternoons.

Students will also be given a copy of the following subject availability in class. More generalised assistance on answering exam style questions and addressing assessment criteria can be sought on any of the days.

Sessions will be run in Lab 11 or Lab 12 for the following subjects:

### Week 7

**Monday 6 March:** Biology, Earth and Environmental Science, Physics and Senior Science

**Tuesday 7 March:** Biology, Chemistry, Senior Science

### Week 8

**Monday 13 March:** Physics and Senior Science

**Tuesday 14 March:** Biology, Chemistry, Earth and Environmental Science and Senior Science

### Week 9

**Monday 20 March:** Biology, Earth and Environmental Science, Physics and Senior Science

**Tuesday 21 March:** Biology, Chemistry, Senior Science

### Week 10

**Monday 27 March:** Earth and Environmental Science, Physics and Senior Science

**Tuesday 28 March:** Biology, Chemistry, Earth and Environmental Science and Senior Science

### Week 11

**Monday 3 April:** Biology, Earth and Environmental Science, Physics and Senior Science

**Tuesday 4 April:** Biology, Chemistry, Senior Science



## News from Creative and Performing Arts

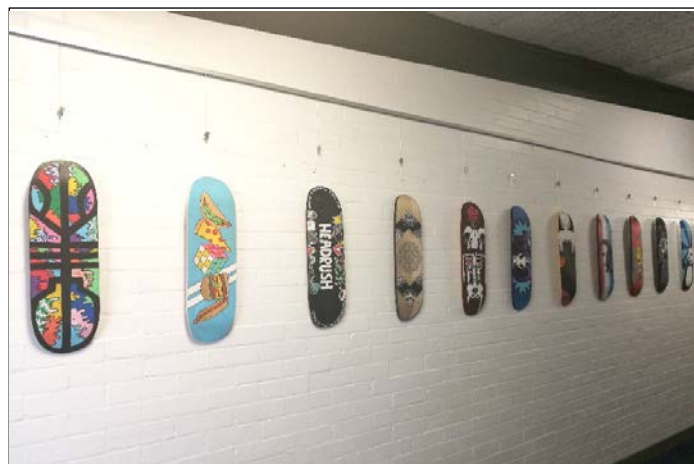
2017 is going to be an exciting year for Creative and Performing Arts. We welcome Mrs Jill Murphy, our new dynamic Music Teacher. Mrs Murphy brings a wealth of expertise to our faculty.

The Visual Arts team will be providing some exciting opportunities including the annual 'Figtree High School Annual Photography Prize' and extracurricular program 'Studio Art' aimed at enthusiastic students who would like to increase their artmaking practice. There will also be continued junior exhibitions showcased in our new foyer gallery and the impressive annual HSC Body of Work showcase. Other engaging opportunities that will support our teaching and learning programs include the National Arts School Intensive Studio program, Wollongong City Gallery workshops and regional 'Senior Visual Arts Camp'. Ms Cook has been leading our student CAPA Committee who have been developing some very exciting projects including our new CAPA logo, gallery spaces and community murals.



### CAPA logo design & polo shirt

Last year the Creative and Performing Arts Committee (CAPA Co) students Nova Tucker, Shannon Newman, Bethany Brighton and Kiara Nedic designed a dynamic logo to represent the Creative and Performing Arts at Figtree High School. This logo will be applied to all CAPA collateral, including the recently developed CAPA polo shirts. These polo shirts will showcase each student's sub-committee and be worn by CAPA staff and students during extracurricular events. Polo shirts will be available later this term.



### Curatorial project

This term the CAPA Co curatorial team members Clara Lazova, Krissie Skarvelis and Natasha Hynoski have been celebrating the success of Visual Arts students at Figtree High School by exhibiting artworks in the CAPA hallway and the newly refurbished gallery space at the front of the school. These students have worked during lunches to ensure that a variety of artworks are on display and will continue to display the works of students throughout 2017.



### Murals

CAPA Co students Aiden Grbevski and Carley Pryor have been working alongside CAPA staff to design and develop a large-scale mural for the front of the school. This mural represents the Illawarra and the schools sporting houses 'Gurri', 'Warrigal', 'Jerrangaugh' and 'Buru'. The mural is currently in its design phase, with the mural team beginning to paint during week 6.

Aiden and Carley have also been selected to help lead the Youth Services 'I love Wollongong because....' Panel Project, where they will select final images along with Dapto High School, the Youth Centre and Wollongong City Gallery to be displayed on the exterior of the Wollongong Youth Centre. In term 2, Figtree High School will submit their own photographs that capture what they love about Wollongong and will be part of a public exhibition at Wollongong Youth Centre.

## **Music**

### **Vocal Ensemble**

Vocal Ensemble for 2017 has resumed. Rehearsals are on Thursdays Lunch 2 in Room MU2. Vocal ensemble is open to any interested students from Year 7 to Year 12. Not sure if this ensemble is for you? Students are most welcome to come along and try it out without having to commit. Please see Mrs Murphy for further information.

### **Instrumental Ensembles**

Instrumental Ensemble for 2017 are about to begin. Do you play a musical instrument and would like to be a part of our ensemble program? This opportunity is open to any interested students from Year 7 to Year 12. Please see Mr Malouf if you are interested or would like further information. There are always opportunities for small ensembles to rehearse and perform here at Figtree High School.

### **Southern Stars Combined Choir or Schools Spectacular Combined Choir**

Are you a vocalist who is interested in performing as part of the Southern Stars or Schools Spectacular Combined Choir? If so, please come and see Mrs. Murphy in the CAPA staffroom. You must be a member of the vocal ensemble to participate in this performance opportunity.

### **The Arts Unit Opportunities**

**Would you like to be a Featured Artist/Backing Vocalist at this year's Schools Spectacular?**

Applications are now open for talented vocalists to audition to be a featured artist/backing vocalist at this year's Schools Spectacular. Applications close Thursday 23 March 2017. Please see Mrs Murphy if you would like any further information.

<https://www.artsunit.nsw.edu.au/featured-artists-backing-vocalists-application-form>

### **State Junior and Senior Music Camp**

Applications are now open for the 2017 State Music Camps. Talented music students (vocalists and instrumentalists) from across NSW Public Schools join for one week each year to receive expert tutelage and develop their performance skills. Participants rehearse and perform high quality repertoire culminating in a concert for families and friends on the final night of the camp

Musical activities at camp include participation in a major ensemble (symphony orchestra, symphonic bands, vocal ensembles, rock band and saxophone ensemble) as well as several elective ensembles and activities. Elective activities include brass and woodwind ensembles, stage band, jazz improvisation, composition, music technology, music theatre, music and movement.

There are two camps:

Junior Music Camp (Years 5-8) will be from Sunday 16 July – Friday 21 July (Week 1, Term 3).

Senior Music Camp (Years 8-12) will be from Sunday 25 June – Friday 30 June (Week 10, Term 2)

For more information, please visit the Arts Unit website (URL below) or talk to Mrs Murphy (CAPA Staffroom).

<https://www.artsunit.nsw.edu.au/state-junior-and-senior-music-camps>

**Peter Hewitt**

**Head Teacher Creative and Performing Arts**

## O'Brien's Road Footbridge Replacement

The existing pedestrian bridge over American Creek which connects O'Brien's Rd to Figtree High School is approaching the end of its design life. Council proposes to replace the existing with another bridge approximately 50 metres to the East.

### Why are we doing this work?

Inspection checks on the current 27m long steel truss bridge have shown it to be in need of significant repairs to remain safe and serviceable. Parts of the bridge are suffering from corrosion and it does not meet current standards.

### What are the options?

1. Demolish existing bridge and do not replace
2. Remove the current bridge, upgrade off site then reinstall
3. Refurbish the current bridge in place
4. Replace the bridge

### The solution

The proposed project to replace the existing with a new bridge 50m east of the current location has the following advantages:

- Makes use of some existing bank protection works
- Approximate span is 20m vs 27m existing
- Allows the most economical bridge type to be used
- Will be fully compliant to current standards
- Construction does not interrupt pedestrian use, can be undertaken at any time without the need to work around school terms
- Is the most economical option

### Scope of Work:

1. Trim and prepare creek banks with provision of additional basalt coble armour.
2. Install supports including piling for the new bridge.
3. Place the pre-constructed deck onto supports.
4. Install hand railings.
5. Construct new concrete approaches to the bridge and link to the shared path on O'Brien's Road.
6. Remove existing bridge, cut into transportable portions and scrap
7. Remove the approach paths to the old bridge.

Hours of work will be 7am till 6pm Monday to Friday, and 7am to 1pm on Saturdays weather permitting.

### What are the environmental concerns?

Identified as a Category 1 Riparian Corridor and a Fisheries Habitat, Council is conducting a Review of Environmental Factors (REF) on the site and will ensure all constraints are met in the design and construction of the new bridge.

### How can I comment on the planned work?

If you have any concerns or questions about the planned works please contact Council by close of business Monday 27 March 2017:

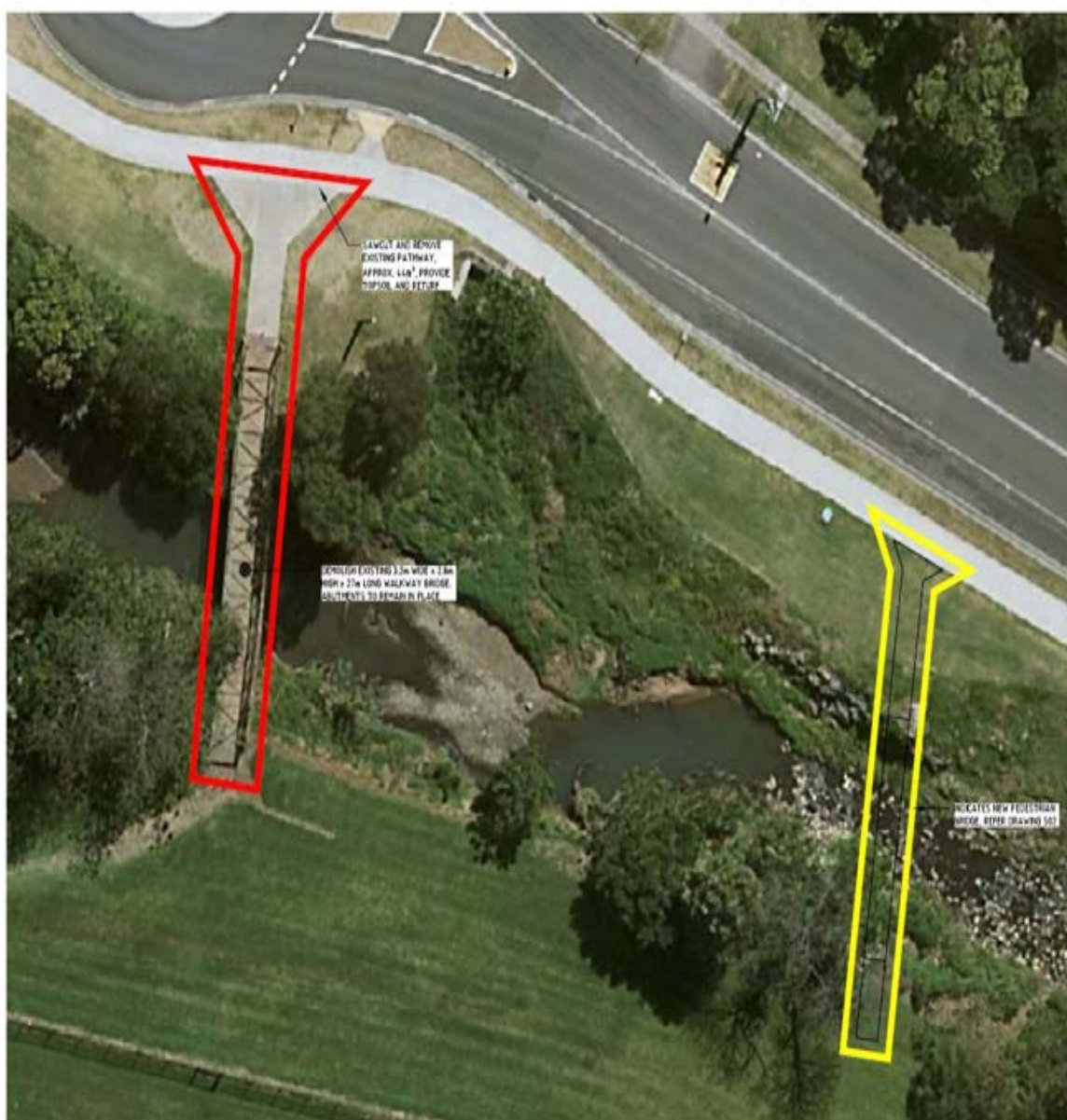
Emailing: [engagement@wollongong.nsw.gov.au](mailto:engagement@wollongong.nsw.gov.au)

Phoning: 42 27 7111.





### Location plan of proposed work:



## Work to upgrade school zone signs across New South Wales

**The NSW Government is funding an upgrade to the school zone signs as part of the state-wide Roads and Maritime School Zones Network to improve the safety for students in the area.**

Roads and Maritime Services is upgrading school zone signs at 400 schools across the state. This includes removing and replacing the existing static signs with school zone signs with flashing lights that aligns to the latest Roads and Maritime design installation specifications and standards.

Roads and Maritime currently manage over 5800 school zones flashing signs that keep school children safe across NSW. Installing these flashing lights in school zones has been shown to improve driver awareness of the need to drive at a lower speed to ensure the safety of children and others coming and going from the school area.

New flashing signs will be installed and tested at a time outside school zone operational hours. Once the new signs are working the old signs will be removed.

### Our work schedule

Work to install the signs will take **one shift**. Our work hours will be between **7am** and **5pm**, between **Mondays** and **Fridays** and **8am** to **1pm** on **Saturdays**.

### How will the work affect you?

The work will be carried out so that it does not impact the operations of school zone flashing signs around affected schools. There will be some footpath and lane closures while work is carried out, and we will have signposting and detours in place when required. Some parking spaces will also be unavailable while work is completed. Our work will be noisy at times but we will do everything we can to minimise its impact.

### Traffic changes

There will be temporary traffic changes during our work hours to ensure the work zone is safe.

Lane closures will be in place and may affect travel times. Please keep to speed limits and follow signs and traffic controllers' directions. For the latest traffic updates, you can call 132 701, visit [livetraffic.com](http://livetraffic.com) or download the Live Traffic NSW App. If you have any questions, please contact our Project Manager Arthur Manganas on 97944823 or on email at [FlashingLights@rms.nsw.gov.au](mailto:FlashingLights@rms.nsw.gov.au)

For more information on our projects, visit [rms.nsw.gov.au](http://rms.nsw.gov.au) Thank you for your patience during this important work.



### Translating and Interpreting Service

If you need an interpreter, please call the Translating and Interpreting Service (TIS National) on **131 450** and ask them to telephone Roads and Maritime Services on 9794 4823

#### Arabic

إذا كنتم بحاجة إلى مترجم، الرجاء الاتصال بخدمة الترجمة الخطية والشفوية (TIS National) على الرقم 131 450، والطلب منهم الاتصال بوكالتكم Roads and Maritime Services على الرقم 9794 4823

#### Cantonese

若你需要口譯員，請致電 131 450 聯絡翻譯和口譯服務署 (TIS National)，要求他們致電 9794 4823 聯絡 Roads and Maritime Services。

#### Mandarin

如果你需要口译员，请致电 131 450 联系翻译和口译服务署 (TIS National)，要求他们致电 9794 4823 联系 Roads and Maritime Services。

#### Greek

Αν χρειάζεστε διερμηνέα, παρακαλείστε να τηλεφωνήσετε στην Υπηρεσία Μετάφρασης και Διερμηνείας (Εθνική Υπηρεσία TIS) στο **131 450** και ζητήστε να τηλεφωνήσουν Roads and Maritime Services στο 9794 4823

#### Italian

Se desiderate l'assistenza di un interprete, prego telefonare al Servizio Interpreti e Traduttori (TIS National) al **131 450** chiedendo di contattare Roads and Maritime Services al 9794 4823

#### Korean

통역사가 필요하시면 번역통역서비스 (TIS National) 에 **131 450** 으로 연락하여 이들에게 9794 4823 번으로 Roads and Maritime Services 에 전화하도록 요청하십시오.

#### Vietnamese

Nếu cần thông ngôn viên, xin quý vị gọi cho Dịch Vụ Thông Phiên Dịch (TIS Toàn Quốc) qua số **131 450** và nhờ họ gọi cho Roads and Maritime Services qua số 9794 4823



# Stressed about high school costs?

**Would \$500 help pay for uniforms, books, excursions,  
tutoring, a laptop or tablet?**

Saver Plus can match your savings for school costs, dollar for dollar,  
up to \$500!

You may eligible if:

- you have a Health Care or a Pensioner Concession card and,
- you or your partner have some regular income from work such as full-time, part-time, casual or seasonal work.

**Contact Lindi Jamieson-Brown  
your local Saver Plus Coordinator:**

**0427 439 234**

**or [lindi.Jamieson-Brown@thesmithfamily.com.au](mailto:lindi.Jamieson-Brown@thesmithfamily.com.au)**

Saver Plus was developed by ANZ and the Brotherhood of St Laurence and is delivered in the Illawarra, Wollongong, Southcoast and Southern Highlands area by The Smith Family. The program is funded by ANZ and the Australian Government. Find more information at [saverplus.org.au](http://saverplus.org.au).





Department  
of Industry  
Resources & Energy

# Support to Pay Electricity and Gas Bills\*



FAMILY ENERGY REBATE



LOW INCOME HOUSEHOLD REBATE



NSW GAS REBATE



MEDICAL ENERGY REBATE



LIFE SUPPORT REBATE



ENERGY ACCOUNTS PAYMENT ASSISTANCE

Help is available to pay  
your energy bills.

For information on  
rebates and emergency  
assistance go to:

[www.resourcesandenergy  
.nsw.gov.au/rebates](http://www.resourcesandenergy.nsw.gov.au/rebates)

or phone Service NSW  
on 137 788

\* eligibility criteria apply

## YOU COULD BE ELIGIBLE FOR ONE OR MORE OF THESE REBATES/ASSISTANCE PROGRAMS

**Family Energy Rebate\*** – \$150 or \$15 per year – If you are the electricity account holder in your household, have dependent children and receive a DHS payment called Family Tax Benefits (Part a or B), you could qualify for this electricity rebate. Information on application deadlines is available from our website.

**NSW Gas Rebate\*** – \$90 per year – If you have natural gas or use LPG for cooking, heating or hot water, you could qualify for this gas rebate. To be eligible you will also need to be the gas account holder and have a DHS or DVA Pensioner Concession Card, DHS Health Care Card or a DVA Gold Card marked with WW, TPI or EDA.

**Medical Energy Rebate\*** – \$235 per year – You could qualify for this rebate if you, or someone living with you, have an inability to self-regulate body temperature which is often associated with medical conditions such as Parkinson's disease and Multiple Sclerosis. The electricity account holder in your household must have a DHS or DVA Pensioner Concession Card, DHS Health Care Card or a DVA Gold Card.

**Low Income Household Rebate\*** – \$235 per year – If you are the electricity account holder in your household and have a DHS or DVA Pensioner Concession Card, DHS Health Care Card or a DVA Gold Card marked with WW, TPI or EDA, you could qualify for this electricity rebate.

**Life Support Rebate\*** – If you are required, or have someone living with you who is required, to use approved energy-intensive medical equipment at home, you could qualify for this electricity rebate. Information on approved equipment and rebate rates is available from our website.

**EAPA\*** – Energy Accounts Payment Assistance Scheme – helps people experiencing a short term financial crisis or emergency to pay their electricity or natural gas bill. The scheme helps people stay connected to essential energy services during a financial crisis. EAPA is not means tested and you do not need to hold any DHS or DVA concessions cards to access this scheme.

## HOW CAN I GET MORE INFORMATION AND WHERE DO I APPLY?

The Department of Industry website has all the information you will need to determine if you are eligible for an energy rebates or emergency assistance. Go to [www.resourcesandenergy.nsw.gov.au/rebates](http://www.resourcesandenergy.nsw.gov.au/rebates) for further information.

If you do not have access to the internet you can call Service NSW on 137 788 and talk to a customer service officer about your circumstances. Service NSW can also post you application forms.

If you have an electricity or natural gas account with an energy retailer you can call them to apply over the phone for the Low Income Household Rebate and NSW Gas Rebate. Your retailer can also provide you with application forms for other rebate programs.

## REMEMBER

If you have a DHS (Centrelink) Health Care Card you could qualify for the Low Income Household Rebate and/or NSW Gas Rebate.



# EnVie KIDS' RUN

FITNESS WOLLONGONG

Sunday March 12<sup>th</sup>, 8am start



1km, 4km and the Belle Property 2km dash for kids and their parents. Bring your family for a day of healthy fun.

All entrants will go into the draw to win a \$500 donation to their school!



Brand new medals this year for every child

Proudly Sponsored By



# SOMETHING TO DO

## FEBRUARY - JUNE 2017

wollongong  
**YOUTH SERVICES**

### RAINBOW LEAGUE

A social group for same sex attracted, gender diverse or questioning young people aged 16-25

**MEETS FORTNIGHTLY  
MONDAYS 4-6PM**

### ON AIR

Tune into 106.9 VoxFM to listen to radio hosted by young people - want to be a presenter? Contact us

**MONDAYS 8-9PM**

### CODE THE GONG

Learn to write computer code and build a website, create an app or a game and explore technology - bookings essential

**TUESDAYS 4.30-6PM**

### INTRO TO GUITAR

Learn how to play guitar - half hour lessons - bookings essential

**WEDNESDAYS 3-5PM**

### CREATIVE DEN

Learn new skills, be part of a creative space, create artworks for a Youth Week exhibition

**WEDNESDAYS 4-5.30PM**

### YOU DECIDE

We provide the money, you decide how it is spent - Apply now to be part of this group of decision makers

**WEDNESDAYS 4-5.30PM**

### BARISTA COURSE

Be mentored by experienced baristas and learn to make café quality coffee - 5 week course - bookings essential

**WEDNESDAYS 3.30-5PM**

### MUSIC MAKERS

Music workshops for young people - bookings essential

**THURSDAYS 4-5.30PM**

### YOUTH WEEK COMMITTEE

Young people working together to organise events and activities for Youth Week

**MEETS FORTNIGHTLY  
THURSDAYS 3.30-5PM**

### ON STAGE

Performance space for young people - full PA, sound engineer and lighting provided - contact us to book your space

**THURSDAYS 6-7.30PM**

### FRIDAY NIGHTS

2 February Dodgeball  
3 March Girls Night In  
7 April Live Music  
5 May Trivia  
2 June Anime

**FRIDAYS 6-9PM**

### HANG OUT

Basketball, pool, table tennis, air hockey, TV, football, young womens space and more - space for young people 12-18 years

**TUESDAYS 3-6PM  
THURSDAYS 3-8PM  
SATURDAYS 12-4PM**

### YOUTH WEEK

To be part of deciding the where, what and how of Youth Week 2017 - contact the Youth Services team - check out what's happening at [youthweek.com.au](http://youthweek.com.au) in March

**1-9 APRIL**

### SPECIAL EVENTS

8 March Int. Womens Day  
15 April World Circus Day  
4 May Star Wars Day  
26 May Sorry Day  
Visit the Youth Centre on these days to see what's happening!

### REHEARSAL SPACE

Fully equipped sound proof music rehearsal room \$5pp-2hr sessions - bookings essential

**VARIOUS TIMES  
TUESDAYS - SATURDAYS**

### BOOK A SPACE

Are you a young person and need a space for your group to meet? Book a space at the Youth Centre for free

**TUESDAYS - SATURDAYS**



These activities and events are for young people aged 12-24 years.  
To make a booking or to find out more information  
**CONTACT THE YOUTH SERVICES TEAM**  
P: 4227 8222 E: [youthservices@wollongong.nsw.gov.au](mailto:youthservices@wollongong.nsw.gov.au)





# YOGA

## workshops

### for ages 12-25

**FREE!**

**Wednesdays, 3.45pm-4.45pm**

Learn about yoga and meditation techniques to relax, unwind and manage stress in our free yoga workshops with Henness.

- 15 and 22 February
- 1, 8, 15 and 22 March

For more info, contact  
headspace Wollongong on  
4220 7660 or email  
[headspace@gph.org.au](mailto:headspace@gph.org.au).

**Bookings Essential:**  
<http://yoga2017.eventbrite.com.au>



**headspace**  
Wollongong

Yoga Workshops are thanks to the generous support of



headspace National Youth Mental Health Foundation is funded by the Australian Government Department of Health under the Youth Mental Health Initiative



Sunday 19th March 2017

Rectangular Snip



# CAR WASH

At Wollongong Toyota  
Flinders Street, North Wollongong

9.30 AM—2.30PM

Raising money for The Disability Trust including TDT Music Makers— a performance program.



Bacon & Egg/ Sausage Sizzle BBQ &  
Fundraising Car Wash



For more information about the Car Wash or Music Makers  
contact Melissa 0409 976 987 /

[www.facebook.com/performancebythosewithadisability](http://www.facebook.com/performancebythosewithadisability)

\$5 per car







**Thursday March 9<sup>th</sup> 2017**

At the Fraternity Club Fairy Meadow  
12:00 noon to 6:00pm

**Featuring:**

## **NDIS Community Forums**

**Session 1 – 10:00am – 12:00pm**

**Session 2 – 6:00pm – 8:00pm**

To express your interest in attending the forum please head to the IDO Illawarra Disability Options Facebook page and click attending forums.

### **Organizing Committee:**

TAFE, Dep ED, Northcott, The Flagstaff Group, Work Skills, Uniting, Community Gateway, EET, Greenacres, Interchange.



## **EXHIBITORS INCLUDE:**

- NDIA
- Chatter Hands
- My Supports
- Essential Employment and Training
- The Flagstaff Group
- Just Better Care Illawarra & Southern Highlands
- Greenacres Disability Services
- IDEAS
- Northcott
- Catholic Care Wollongong
- Ability Artists
- Lifestart
- NSW Deaf Society
- Illawara Advocacy
- Para Meadows School
- Ables Nightclub
- The Disability Trust
- House With No Steps
- Scope Home Access
- Life Without Barriers
- Ability Options
- Uniting – Ability Links
- Illawarra Aboriginal Corporation
- Aspect South Coast School
- Community Gateway
- WEA Illawarra
- Intellectual Disability Rights Service-
- Criminal Justice Support Network
- NSW Council for Intellectual Disability / My Choice Matters
- Kiama Community College
- Blue Haven Care
- NSW Dept. of Education
- TAFE Illawarra
- Disability Services Australia
- Wollongong Catholic Education
- Autism Spectrum Australia
- Better Goals
- Schizophrenia Fellowship of NSW
- Wollongong City Council
- Mission Australia
- Special Olympics Illawarra
- Human Services



# THIRROUL SEASIDE AND ARTS FESTIVAL

[www.thirroutfestival.com](http://www.thirroutfestival.com)

Friday 31<sup>st</sup> March – Sunday 2<sup>nd</sup> April 2017



An Australian Thirrout  
Lions Club Project

## “ **THROUGH MY EYES** ”

JUNIOR PHOTOGRAPHY COMPETITION  
SUNDAY 2<sup>nd</sup> APRIL 2017

### 2 AGE CATEGORIES:

“WRIGGLERS” PRIMARY SCHOOL  
1<sup>st</sup> PRIZE \$200 2<sup>nd</sup> PRIZE \$100

“GROMMETS” HIGH SCHOOL  
1<sup>st</sup> PRIZE \$300 2<sup>nd</sup> PRIZE \$200

\*\*\* 1 entry per person Maximum print size 8"x10"\*\*\*

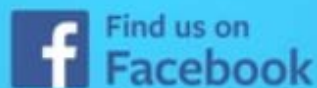
Entry form & Terms & Condition form can be downloaded from the  
Thirrout Seaside Festival FACEBOOK PAGE or WEBSITE  
or by emailing BEC OWEN [thatmomentphotography2015@gmail.com](mailto:thatmomentphotography2015@gmail.com)



Thirrout Festival PO Box 19 Thirrout NSW 2515

**Are you a student or a school  
leaver looking for work?  
Do you need help finding a job?**

**Contact us TODAY on 1800 243 513**



*Help us celebrate our 10th Sky's the Limit Mini  
Olympics for people with disability!*

info@eetgroup.com.au  
www.eetgroup.com.au

Questions about  
the NDIS?

1800 NDIS 2U  
(1800 634 728)