



FIGTREE HIGH SCHOOL

PARENT BULLETIN

Term 2 Week 2 30th April, 2015

2 Gibsons Road, Figtree NSW 2525 Ph: 4271 2787 Fax: 4271 6626
Email: figtree-h.school@det.nsw.edu.au

Upcoming School Events

Week 2(B)	Beginning Monday 27 th April 2015
30.4.15	<ul style="list-style-type: none"> - Yr 8 French and German Assessment tasks - Yr 8 Science and Yr 9 Science Assessment tasks - Yr 11 Mathematics and Mathematics General Assessment task - Greater Southern Rugby League Trials - European Handball Championships Gala Day - Yr 10 Commerce Excursion to Sydney - Yr 11 Entertainment students completing White Card Course
1.5.15	<ul style="list-style-type: none"> - Yr 11 CAFS Assessment task - Yr 11 Work Studies Assessment task - Yr 8 French and German Assessment tasks - Yr 8 Maths Assessment task - Yr 8 Science Assessment task – in class - Yr 9 Health Assessment task due - White Card Course for Yr 11 Entertainment students - Greater Southern Rugby League Trials - Open Boys and Girls South Coast Touch Trials
Week 3 (A)	Beginning Monday 4 th May 2015
4.5.15	<ul style="list-style-type: none"> - Yr 7 German Assessment tasks this week - Yr 11 Camp at Yarramundi - South Coast U15's Boys and Girls Touch Carnival
5.5.15	<ul style="list-style-type: none"> - Yr 11 Camp at Yarramundi - Yr 12 Biology and Yr 12 Senior Science Excursion - Selected Yr 9 PASS Students at PSSA Basketball
6.5.15	<ul style="list-style-type: none"> - Yr 11 Camp at Yarramundi - Selected Yr 9 PASS Students at PSSA Basketball - Grade Sport competition commences for Term 2 & 3
7.5.15	<ul style="list-style-type: none"> - South Coast Table Tennis Championships at Figtree HS - Selected Yr 9 PASS Students at Central Wollongong Cross Country carnival
8.5.15	<ul style="list-style-type: none"> - Yr 7 Geography Assessment Task - Yr 11 Ancient History, Yr 11 Legal Studies, Yr 11 Software Design and Development and Yr 11 Sport, Lifestyle and Recreation Assessment Task - Yr 9 PDHPE Assessment task - Defence Force Women in Leadership Morning Tea - Zone Cross Country
Week 4 (B)	Beginning Monday 11 th May 2015
11.5.15	<ul style="list-style-type: none"> - Yr 10 History Assessment Task due - Yr 7 German Assessment tasks this week - Little Figgies Playgroup – 11am
12.5.15	<ul style="list-style-type: none"> - NAPLAN Language Conventions and Writing tests for students in Years 7 and 9 - Yr 11 Modern History Assessment task - Yr 11 Mathematics Extension 1 Assessment task - Yr 9 Geography Assessment task
13.5.15	<ul style="list-style-type: none"> - NAPLAN Reading tests for students in Years 7 and 9 - Illawarra Careers Expo excursion for Yrs 10 & 12 and Yr 11 Work Studies students
14.5.15	<ul style="list-style-type: none"> - NAPLAN Calculator and Non-Calculator tests for students in Years 7 and 9 - Yr 8 TAS Excursion to the Powerhouse Museum
15.5.15	<ul style="list-style-type: none"> - NAPLAN catch up for absent students - Yr 10 Geography Assessment task - Yr 7 German Assessment tasks this week

PRINCIPAL'S REPORT

It has been a very rewarding start to the beginning of Term 2. I would encourage parents and carers to view the official Figtree High School (FHS) Website and Facebook page to share and celebrate the successes and talents of our students who have had outstanding achievements across academic, volunteering, creative and performing arts and sport. I would also encourage you to download the free official Figtree High School app in order to receive school alerts and information. Instructions are available on the FHS Website.

The special ANZAC Ceremony was very emotional and the staff and students participated in a very professional presentation. This was provided by the dedicated staff and students of Figtree High School. In particular, I would like to thank the HSIE, Creative Arts and English/Drama faculties, that is, staff and students. The students were exceptional in their recognition of the respect that such an important event holds in the Australian community.

The School Plan 2015-2017 and Annual School Report are near completion and will be uploaded to our website in the first weeks of May.

The feedback from parents/carers has been very positive regarding our **Parent Online Payment** for school fees and excursions.

General contributions are voluntary contributions which greatly assist in maintaining and increasing the quality of education for your child. These contributions are used to purchase library books, student recognition awards, teaching resources, SMS message system, computer software, computer hardware and electronic classroom devices. We greatly value your assistance in providing this voluntary contribution.

We provide several easy methods for payment:

- use the quick and convenient **Parent Online Payment** by logging onto the Figtree High School website <http://www.figtree-h.schools.nsw.edu.au> click the button 'Make a Payment' and enter the required information
- link to **Parent Online Payment** through the official Figtree High School app
- pay in cash or eFTPOS at the school administration office
- contact the school by phone with eFTPOS details

Carol Marshman

Principal

Figtree High School – Core Values: Respect, Safety and Learning

A focus on Learning

It's NAPLAN time!

The NAPLAN testing occur for students in Years 7-9 during Week 4 this term, Tuesday 12th May through to Thursday 14th May. It is essential that students attend school on the NAPLAN testing days, as the information that will be provided to parents and the school about your child's literacy and numeracy skills is important. The NAPLAN test results enable parents and the school to examine student improvement over time, as well as identifying particular literacy or numeracy skills that need to be more explicitly taught across different subject areas. Any students who are absent from school during the scheduled NAPLAN tests will complete the tests on the scheduled 'catch up' day, Friday 15th May. Students must bring their own eraser, pencil sharpener **and calculator (Thursday)** for the tests. The NAPLAN test schedule is listed below:

Tuesday 12th May –

Language Conventions and Writing tests

Wednesday 13th May –

Reading test

Thursday 14th May –

Numeracy – Calculator and Non-calculator tests

An information note for parents about the NAPLAN Tests will be distributed to students over the next week. If parents would like additional information about NAPLAN, the BOSTES Website may be of interest.

<http://www.boardofstudies.nsw.edu.au/naplan/>

Figtree High School Homework Centre

Does your child need help getting organised for assessment tasks? Need assistance researching appropriate information for assessment tasks? Do they need support to interpret assessment tasks? or Does your child need to catch up with homework and/or classwork? If you answered YES – then the Figtree High School Homework Centre is for you!

The Homework Centre will continue this term in the Library on Monday afternoons from 3pm until 4pm. The centre will be open for approximately 1 hour every Monday, students will be given a light afternoon tea and rostered teachers will be there to assist students.

Please encourage your child to attend if you think they would benefit from this extra assistance. Any questions about the Homework Centre can be directed to the school on 42712787.

Parent Teacher Meetings - Save the Date

Our school Parent Teacher meetings will be held later this term. This afternoon/evening provides you with the opportunity to discuss your child's learning, achievement and progress with the class teachers. These will occur in the Auditorium over two evenings;

4th June: Years 8, 11 and 12 – 2:30pm – 7:30pm

25th June: Years 7, 9 and 10 – 2:30pm – 7:30pm

Information regarding the online booking process, that we successfully implemented last year, will be distributed later this term to parents. Questions about parent teacher night can be directed to your child's Year Advisor or Deputy Principal.

Ellie Donovan

Deputy Principal

Please note that due to the extended period of rain, our school soccer and football fields are currently closed, and will remain so until further notice.

WESTFIELD FIGTREE AND WARRAWONG SITE VISIT

On Friday the 24th April, Mr Sargent-Wilson organised a day out to visit Figtree and Warrawong Westfield sites for the people in the GenZ-2Work Program. The day was about showing us what type of occupations and opportunities there were when working for Westfield. Our first stop was at Westfield Figtree, where we met various managers of the various departments in the centre. We heard from the marketing managers, business administration manager and facilities managers as well as the centre manager Brett Leonard. We had an interesting discussion with each of them as they explained the different roles they play to make the centre work, as well as, telling us how they got to that job.

After the talk Mr Sargent-Wilson divided us into 2 groups, each would either go with a manager for Coles, or a manager for Kmart. Each group went into Kmart or Coles to experience what it was like behind the doors, and see how they load stock, and what it's like with organising the store to be ready for customers.

After we finished that, we travelled on a bus to Warrawong Westfield. When we arrived we had lunch in the food court and got free subway, which was a bonus for the day (thanks to Brett). We then later met up with other managers where we were divided into 3 groups, and each manager gave us a guided tour of their department as they explained to us what their roles were with certain aspects or certain locations around the centre.

The Facilities manager showed us a giant room where all the air conditioning was controlled upstairs on the roof, and showed us what happens with fire or when the sprinklers go off in the centre and how everything works. The marketing managers showed us around the centre and told us about how they work with advertising for stores, and promotion for events or celebrities. The Centre manager walked us around and told us about different stores and how they become a store in Westfield, along with telling us how everything works in the centre.

After we got shown around both Westfield sites, we got back on the bus and went back to school. It was an awesome day and we learnt so much that happens behind the scenes

Thank you Mr Sargent-Wilson for putting all your effort into making sure this day was possible and a huge thank you to all the Westfield employees who helped us so much on the day.

Rebecca McBey Year 10 student

TAS Faculty News

Congratulations to **Year 8 Technology Mandatory** students for their efforts with the production of Remembrance Poppies for the Wollongong Art Gallery events held on 18th April and our school ceremonies on 24th April to commemorate Anzac Day. This was a great opportunity for community and school service for these students.

An excursion has been organised for **all Year 8 Technology Mandatory** students to attend the **IMAX Theatre and the Powerhouse Museum on Thursday 14 May 2015**. This will be an opportunity for students to immersed in the world of technology and identify its impacts on our lives. (See attached permission note for further details)

I would like to take this opportunity to thank parents who have paid their child's subject fees in TAS and encourage those who are making instalments to continue to do so.

Marius Polhill, a year 12 **Hospitality** Student has been nominated for the **State VET Student of the Year awards**. He will be competing against other VET students in the state for this prestigious award in the form of portfolio and interviews. We wish Marius all the best in the process and consider him a winner already.

Year 12 Textiles and Design students, Kayla Bentley, Emily Hansen and Shaniah Davies working on their Major Textiles Projects this week.





ANZAC CEREMONY POPPIES 2015



Mrs Smith with the Remembrance Poppies

Korean Cultural Homestay Program

It is with regret that I have withdrawn our intent to travel to Je Ju, Republic of Korea in September, 2015. I hope that we will gather some interest again in this excursion when our Korean visitors arrive in August for their homestay visit with us. Please consider this opportunity to host a billet and return the completed application form to Mrs Smith, Homestay Coordinator as soon as possible so that organisation for billets can commence.

Mrs Smith

HT TAS

YEAR 8
Technology Mandatory
Excursion to IMAX Theatre & Power House Museum

Date: 14th May 2015
Venue: IMAX Theatre & Power House Museum, Sydney
Time: Depart: 7.30am Figtree High School
Return: 4.00pm Figtree High School
Transport: Bus
Uniform: Full School uniform. Packed lunch will be required as there will be limited opportunity to purchase any food or drink due to time restraints.
Cost: \$30.00 which includes coach transport & entry into IMAX & Power House
Payment: To the front office by 12th May 2015
Purpose: To immerse the students in the world of technology and identify how it impacts on our lives.

All TAS Teachers will be attending

Emergency Contact Phone Number: 0413 453 596

Students must be on time as we are unable to wait for latecomers, if sick on the day please ring and notify us by 6.45am.

Mrs Smith (Head Teacher TAS)

PERMISSION NOTE: (Return to your Technology teacher)

Year 8 Technology Mandatory Excursion

STUDENT'S NAME: _____

Emergency Contact Number and Name: _____

I _____ (Parent/carer) give permission for
my son/daughter _____ to attend the excursion to IMAX
Theatre and Powerhouse Museum on 14th May 2015.

Signed _____ Date _____

Talent Quest 2015

“Get Creative!”

The Talent Quest 2015 is coming in Term 2 this year, so it's time to get creative.

There will be categories in all areas of the Performing Arts.

So..... get your bands, duos, music acts, drama performances, dance, magic and comedy on..... and enter Talent Quest 2015. Lets Get Creative!

Heats commence Term 2 Week 6.

Finals will be held Thursday 11th June.

***** SPONSORS SOUGHT *****

Talent Quest sponsors contribute towards prizes and production costs. All sponsors receive a spot in the programme and a chance to advertise at the event.

If you know of a business or individual who would like to contribute as a sponsor we would love to hear from them.

Entry forms are available from the Creative and Performing Arts staffroom or students can ask a Year 12 Entertainment Student.

P&C NEWS

Due to unforeseen circumstances we had to cancel our P&C meeting last Wednesday night. We apologise for any inconvenience.

Our next meeting will be on Wednesday 27th May, 2015 in the Library at 7.30pm. All welcome.

Thanks,

Sharyn Low
Figtree High School
P&C President

“LITTLE FIGGIES PLAYGROUP”

Figtree High School's Year 11 Exploring Early Childhood class is running "Little Figgies Playgroup". The sessions are every second Monday of the school term.

The next dates for Term 2 are: 27/4/15, 11/5/15, 25/5/15, 22/6/15.

Time: 11am -12midday

Where: Design and Planning Room (Ground level - Industrial Arts block)

Cost: 1 piece of fruit per child. Morning tea provided for parents/caregivers.

Toys, painting, play dough, dress ups, arts and crafts!
Tell your friends and come along and join the fun!!
For more information contact Mrs Wale (TAS Teacher) on 4271 2787



TELEPHONE ISSUES

Due to the recent inclement weather, we are still having issues with our telephone lines. We are waiting for the matter to be rectified by our telephone provider.

We apologise for any inconvenience and hope to have this issue resolved very soon.

Thank you

Expression of Interest - Homestay Program - August 2015

Dear Parents and Students

It is time to plan for the arrival of our Korean Homestay visitors in August 2015. This is a great opportunity to host a billet for 10 days and be involved in the cultural activities and excursions available to billeting families. Families will receive some financial support to assist with costs. **Tentative arrival date is 1st or 3rd August 2015.**

Parent Consent:

My family and I are interested in participating in the program.

Please circle the relevant response.

- We would be able to accept one / two / three billets.
- It would be best if the billet(s) was a male / female / gender is not an issue.

Parent name/s: Signature:.....

The following information will assist us with preparation of necessary documents to be passed onto the organisers of the visit for the Korean parents and students. **Please complete and return to school** via your student no later than **Friday 10 March 2015**.

Student Name _____

Roll Call _____ DOB _____

Parents name/s _____

Address _____

Phone Number Home _____
Mobile _____

Email address _____

Further information will be passed on to you as it becomes available. Please do not hesitate to contact me should you need further information. Thank you for your participation and interest in this valuable experience.

Cathy Smith
Homestay Co-ordinator
HT TAS

Carol Marshman
Principal

42712787 / 0403596333 / catherine.j.smith@det.nsw.edu.au

School Uniform-Ready for Autumn

We remind our students and parents that the school has two suppliers for our school uniform, Lowes at Westfield Figtree and Poppets Direct, who have a warehouse outlet in Montague Street, Fairy Meadow.

Girls have the option to continue to wear the school skirt or our approved school shorts with tan/navy stockings underneath. The school uniform shorts for girls are **mid-thigh length**, plain navy, with no logos, pleats or cuffs **and are the same length around the circumference** of the leg. ***Girls shorts MUST be longer than their fingertips when their hands are extended by their sides.*** Our uniform suppliers have girls shorts in stock. During the cooler months, both boys and girls school uniform includes long navy tailored pants/slacks/tracksuit pants. These pants are **plain navy**. ***Navy jeans are not school uniform.*** We seek our parents support in ensuring that students are wearing the **correct** school uniform each day.

Junior Students



Senior Students



Our school canteen is still selling the school caps for a price of \$12.

If you require assistance with uniforms, please contact Mrs Borst at the school.

Ray White®

Ray White Wollongong/Figtree

69 Kembla Street, Wollongong 2500

ph: 4229 8600 fax 4225 9359

are the proud sponsors of the

Ray White Wollongong/Figtree
Student Scholarships 2014 – 2018

Parent Parking Concerns

The Figtree High School ***staff car parks are not to be used by parents to drop off or pick up students.*** The car park drive ways, including the Figtree Anglican Church driveway, should not be used to complete three point turns. At the end of the school day, these driveways are extremely busy exit points. Staff car parks are not pedestrian access points for parents or students. The school has two pedestrian paths on Gibsons Rd for this purpose. We seek the support of our parents to ensure our car park spaces are safe for our staff and students to ensure they are incident free.

The school has a rear exit gate that enables students to walk north towards O'Briens Road. This road is an ideal pick up point for parents as there is less traffic from Figtree Public School and ample space to stop or park to collect your child after school.

The Figtree Anglican Church front carpark area should not be used by parents to drop off and collect students. This car park is for the staff and visitors of the Figtree Anglican Church. Your cooperation in parking elsewhere is appreciated.

During the last few weeks of Term 1, Council Rangers were patrolling the school and issuing fines to drivers who were parking illegally. We ask our parents to remember that they are role models for our students with regards to their driving behaviour.

CANTEEN NEWS

VOLUNTEERS NEEDED

We are still needing volunteers to help serve at our canteen.

We are not able to serve all the students within the 30 minute lunch breaks at the moment.

We have only had 6 new mums offer to help this year. We need at least another 30 parents to be on our roster for 2015. If you can possibly give just one hour of your time once a month, it would be greatly appreciated.

Please phone Narelle on 4271 2787 between 8.45am to 10.30am Mon- Fri.

Thank you
Diane Grant

Mathematics Competition

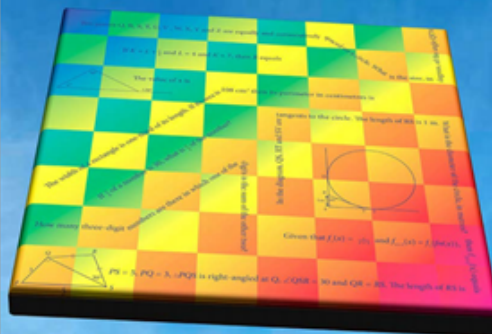
Date of competition: 30 July 2015

This competition is open to all students in Years 7 to 12.

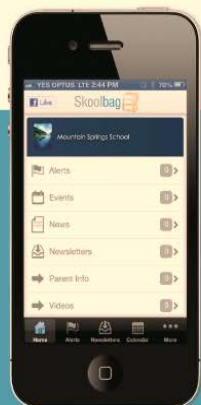
If your child would like to enter in to this competition, it will cost \$6. This entry fee needs to be paid to their maths teacher no later than 24 April 2015. No late entries accepted. No refunds given.

Most people think of maths as just numbers,
*but I think of it
as a game.*

Wenbin Zhang, Silver Medalist, 2014 International Mathematical Olympiad



**Australian Mathematics Competition
30 July 2015**



Skoolbag  FOR 
Smartphone school to parent communication

Skoolbag is a mobile App for your school to communicate directly to both parents and students. It works through both smart phones and smart devices (such as iPads and Android Tablets). Ideal for:

- > School, free push notification alerts
- > School events
- > School newsletters
- > School documents
- > School RSS feeds
- > School social media (Facebook, Twitter)

Skoolbag delivers school notices directly to parents and students



How To Install Skoolbag On Your Smartphone

iPhone & iPad Users

1. Click the "App Store" icon on your Apple device.
2. Type your school name in the search, using suburb name will help.
3. If iPhone, you will see your school appear, click "Free" then "install".
4. If iPad, change the drop list to "iPhone Apps", your school will then be visible, click "Free" then "install".
5. When installed click "Open"
6. Select "OK" to receive push notifications, when asked.
7. Click the "More" button on the bottom right of the App, then "Setup".
8. Toggle on the Push Categories that are applicable for you.



Android Users

You must first have signed up with a Google Account before installing the app.

1. Click the "Play Store" button on your Android Device
2. Click the magnifying glass icon at the top and type in your school name, using suburb name will help.
3. Click the school name when it appears in the search.
4. Click the "Install" button.
5. Click "Accept" for various permissions (please note, we do not modify any of your personal data on your device).
6. Click "Open" when installed.
7. Click the "More" button on the bottom right of the App, then "Setup".
8. Toggle on the Push Categories that are applicable for you.



Don't forget to like us on Facebook! 

Find out more at www.skoolbag.com.au

Skoolbag delivers school notices directly to parents and students.



NOTIFICATIONS

Become a Volunteer Host Family this July!

World Education Program (WEP) Australia is inviting you to experience another culture in your own home by becoming a volunteer host family to an international student arriving in July 2015. Our exchange students from Belgium, Denmark, Ecuador, Chile, Italy and the USA are young people like Estelle and Riccardo, who look forward to experiencing a different culture and becoming a member of an Australian family soon.

Estelle (18) from French-speaking Belgium tells us that she loves music. She plays the guitar and loves to sing! Estelle also likes skiing, traveling and photography, and can't wait to discover and learn about the Australian culture and environment.



Riccardo D (16) from Italy describes himself as always being cheerful and happy. He loves sport in general but in particular basketball, in Italy he plays for a team called the 'Dukes'. Riccardo is passionate about seeing the world and feels very lucky to spend a semester in Australia. He tells us that he is looking forward to living like an Aussie guy!

Request a Full Information Pack Now!

Contact WEP Australia to request detailed program information and student profiles.

Sylvia Kelly

www.wep.org.au

info@wep.org.au

1300 884 733

A not-for-profit student exchange organisation registered with the Education Departments in QLD, NSW and VIC.



EVER CONSIDERED BECOMING A FOSTER CARER?

===== FIND OUT MORE =====

Attend a foster care Information Session
and hear about fostering from local foster
care agencies and foster carers

You will learn about:

- *steps to become a foster carer*
- *roles and responsibilities of foster carers*
- *support available to foster carers*
- *the need for all types of carers,
especially Immediate 'crisis' carers*

Thursday 30th April
6:30pm - 8pm

Venue: Ribbonwood Centre
93-109 Princes Hwy
Dapto

To register your attendance
contact Savita on:

9281 8822
savita@acwa.asn.au

Find out more about fostering today: www.fosteringnsw.com.au



eightfoxavenue



YOUR NEXT PARTY! **TRY** **BUBBLE SOCCER**

For Ages 8 - 80

NEW TO THE GONG

For;

⚽ **BIRTHDAYS** ⚽ **COMMUNITIES** ⚽ **CORPORATES** ⚽ **TEAM BUILDING**
⚽ **CASUAL GROUPS** ⚽ **OR A BUNCH OF MATES**

TO BOOK CALL: 42288322 OR GO TO [EIGHTFOXAVENUE.COM.AU](http://eightfoxavenue.com.au)

eightfoxavenue



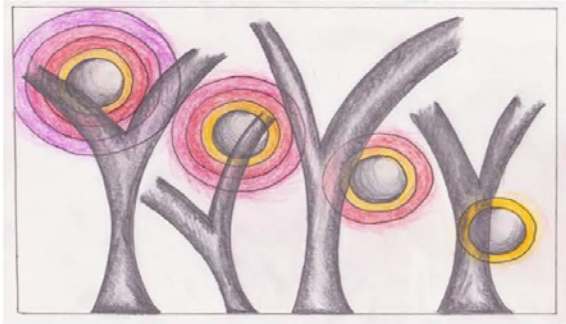
We also offer

- * Indoor soccer comps - men's, mixed, over 35's*
- * Birthday party packages*
- * Casual court hire*
- * Kids programs - Socca Joey's 3-8's, Ready Steady Go Kids 2-6's*
- * Great coffee*
- * Excellent opportunities for qualified instructors for Yoga, Zumba, Pilates, Martial Arts, Fitness, Dance etc.*

For more info call:

42288322 or go to eightfoxavenue.com.au

Single Mother's Support Group



We are a group in the Illawarra community which advocates for and supports single women and their children, in an informal way.

This community inspired group brings single mothers together to share ideas, provide social support and create community that goes beyond a 9-5pm service.

Tea and coffee provided.

Children welcome and morning tea and activity will be provided.

Monday 10am - 12pm: **Illawarra Women's Health Centre**
2-10 Belfast Ave, Warilla

Friday 10am – 12pm: Fortnightly, starting 10th April
Berkeley Neighbourhood Centre,
Winnima Way, Berkeley

Contact: Denika Thomas 4255 6800