



# FIGTREE HIGH SCHOOL

## PARENT BULLETIN

Term 1 Week 4 19th February, 2015

2 Gibsons Road, Figtree NSW 2525 Ph: 4271 2787 Fax: 4271 6626  
Email: figtree-h.school@det.nsw.edu.au

### School Events

Week 4(B)	Beginning Monday 16 <sup>th</sup> February 2015
19.2.15	<ul style="list-style-type: none"> <li>- Yr 12 Mathematics Assessment Task</li> <li>- Yr 11 Study Skills Workshop - Period 5</li> <li>- HSC Music Ensemble Practice – 3:00pm</li> </ul>
20.2.15	<ul style="list-style-type: none"> <li>- Zone Swimming Carnival – Corrimall Pool</li> <li>- School Photos for Years 10, 11 and 12</li> <li>- Yr 9 Music Assessment task</li> <li>- Yr 11 Studies of Religion Assessment task</li> <li>- Yr 12 IPT Assessment Task Major Project presentations</li> <li>- Yr 12 Visual Arts Body of Work Interviews</li> </ul>
Week 5 (A)	Beginning Monday 23 <sup>rd</sup> February 2015
23.2.15	<ul style="list-style-type: none"> <li>- SRC Induction in the Auditorium at 9:45am</li> <li>- Yr 12 Hospitality and Metals and Engineering VET Work Placements all week.</li> <li>- Yr 12 Community and Family Studies IRP and Diary Assessment Task</li> <li>- Yr 10 Music Assessment Performance Task</li> <li>- Yr 8 Music Band Practice – 3pm</li> </ul>
24.2.15	<ul style="list-style-type: none"> <li>- Yr 10 Music Assessment Performance Task</li> <li>- SRC Leadership Day Excursion at University of Wollongong</li> </ul>
25.2.15	<ul style="list-style-type: none"> <li>- Year 7 Safe Surf Program at North Wollongong during Sport</li> <li>- Yr 9 English Assessment task</li> <li>- Yr 7 2016 Figtree HS Expo Night – 6pm</li> <li>- P and C Meeting – Staff Common Room – 7:30pm</li> </ul>
26.2.15	<ul style="list-style-type: none"> <li>- Yr 12 Mathematics Extension Assessment task</li> <li>- Yr 10 Science Student Research Project – Pre-Report Assessment Task</li> <li>- Peer Support for Yr 7 and Yr 11 Leaders</li> <li>- South Coast U15 Boys and Girls Touch trials</li> <li>- Yr 11 Biology Mandatory Field Study Excursion</li> <li>- HSC Music Ensemble Practice – 3:00pm</li> </ul>
27.2.15	<ul style="list-style-type: none"> <li>- School Photos for Years 7, 8 and 9 and students absent on 20/2/15</li> <li>- Yr 11 Mathematics and Mathematics General Assessment tasks</li> <li>- Yr 12 Ancient History Assessment task</li> <li>- Yr 10 Music Assessment Performance Tasks</li> <li>- South Coast Open Boys Basketball trials</li> </ul>
Week 6 (B)	Beginning Monday 2 <sup>nd</sup> March 2015
2.3.15	<ul style="list-style-type: none"> <li>- Yr 12 Construction Work Placement all week</li> <li>- Yr 8 Science Student Research Project due</li> <li>- Yr 12 Mathematics General Assessment task</li> <li>- Yr 7 and 9 vaccinations, catch up vaccinations for Yrs 11 and 12</li> <li>- Coastal Boys and Girls Hockey trials</li> <li>- Yr 8 Music Band Practice – 3pm</li> </ul>
3.3.15	<ul style="list-style-type: none"> <li>- Yr 12 Mathematics General Assessment task</li> <li>- Yr 11 Physics Assessment task</li> <li>- Peer Support for Yr 7 and Yr 11 Leaders</li> <li>- South Coast U14 Boys and Girls Futsal Championships</li> <li>- U13 and U15 Country Cup Rugby League Carnival</li> <li>- Yr 10 History and Geography Excursion</li> <li>- CHS Individual Tennis Championships</li> </ul>
4.3.15	<ul style="list-style-type: none"> <li>- School Photo catch up day at Figtree Public School - 8am-9am</li> <li>- Yr 11 Physics Assessment task</li> <li>- Yr 12 Music Assessment Task</li> <li>- South Coast U16 and Open Girls Futsal Championships</li> <li>- Engineering Studies excursion for selected Yr 9 &amp; 10 students</li> <li>- Year 7 Safe Surf Program at North Wollongong during Sport</li> <li>- CHS Individual Tennis Championships for the next 3 days</li> </ul>
5.3.15	<ul style="list-style-type: none"> <li>- South Coast U16 Boys Futsal</li> <li>- Yr 12 Music Assessment Task</li> <li>- Yr 12 Textiles Excursion</li> <li>- South Coast Area Swimming Championships – Dapto Pool</li> <li>- HSC Music Ensemble Practice – 3:00pm</li> </ul>
6.3.15	<ul style="list-style-type: none"> <li>- Yr 10 English Assessment Task</li> <li>- Yr 12 Advanced and Standard English – AoS Portfolio Assessment Task</li> <li>- Yr 12 English Studies Assessment Task due</li> <li>- Yr 12 Music Assessment Task</li> <li>- South Coast Open Boys Futsal Championships</li> <li>- Motivational Media presentation for all students</li> </ul>

### PRINCIPAL'S REPORT

Congratulations to the students for their participation and exemplary behaviour at the school swimming carnival. Well done to our swimming age champions.

It was with great pleasure that I attended the launch of the Art Express HSC Major Works display at the NSW Art Gallery. Sharnie is a great ambassador for Figtree High School and presented herself well in the WIN News item. Almost 10,000 year 12 students from across NSW, studied Visual Arts last year. ARTEXPRESS has selected and is proudly exhibiting the best 37 artworks. 7 students in particular were recognised and received special awards. Sharnie Loija received an additional award for creativity in art.

Congratulations to our newly appointed Head Teacher Creative and Performing Arts, Mr Peter Hewitt, on the launch of his current Exhibition titled "Dis and Dat". The exhibition is at the TAEM Gallery, Building 25, University of Wollongong from 10 February - 5 March.

Thank you to Adam Sargent-Wilson our careers advisor and Brett Leonard, Senior Centre Manager at Scentre Group (owner and operator of Westfield) for organising an informative session for the Figtree High School Gen Z - 2 Work Program today. Year 10 students listened to Westfield Figtree and Warrawong employees talk about their career pathways. Michael Beverly, Paula Gutierrez and Kristina Jankulovska spoke to the students about their diverse and rewarding career experiences.

Thank you

**Carol Marshman**  
Principal

## **Figtree High School – Core Values: Respect, Safety and Learning**

### **A focus on Learning**

Our core business and one of our strategic directions at Figtree High School is Teaching and Learning. Our teachers work hard to deliver high quality teaching and learning activities to provide all students with opportunities to achieve to the best of their ability. The Australian Curriculum continues to be implemented across Years 7-10 in English, Mathematics, Science and Australian History. Teachers are continuing to implement the ALARM model to support students in the senior years to improve the quality and complexity of their written responses to questions. These strategies have also been implemented in the junior school and this will be an ongoing focus in 2015. If you have any questions regarding what your child is learning in their different subjects, please contact the class teacher in the first instance.

If your child is having difficulty with understanding the work, needs additional assistance with their learning or is experiencing difficulty with their organisation and management skills, please contact our Learning and Support Teachers, Mrs Sue Clifford and Mrs Judy Markham. Additional learning support is provided to students who have English as a Second language (ESL). Mrs Evia Kyriacou is our ESL teacher who can be contacted at the school if your child requires additional support due to their language background.

### **School Fees – Subject Fees and Voluntary Contributions**

In our last newsletter we published the schools fees for 2015. This included voluntary contribution fees and subject specific fees. While the voluntary contribution fees are 'voluntary' – we keep these fees as low as we can to encourage families to be able to pay them, as these fees enable the school to purchase a range of resources to support student learning, including purchasing new technology such as interactive whiteboards. The payment of these fees can be made in part-payments each term, or as a lump sum.

*Years 7 & 8 \$65 Years 9 & 10 \$75 Years 11 & 12 \$85*

The subject contribution fees, such as those for Computing Courses, TAS, Science, Creative and Performing Arts are for the purchase of equipment, resources and consumables that your child will use when studying these courses. We ask all families to support the school and your child's learning by paying the relevant subject contribution fees that you will be invoiced for during this term.

There was an error in the previous publication of the subject contribution fees for Languages. There has been a change to these fees as a result of changes to the resources used in the languages program, to enable students to make greater use of the 'Language Perfect' web based learning resource when students have more regular exposure to languages.

The Languages fees for 2015 are as follows:

Year 7 – nil                      Year 8 - \$20

All language elective classes Years 9 – 11 - \$20

If parents have already made the \$5 payment for Year 7 Language this year, please contact the Office to discuss this.

Please note that the fees published in the 2015 information booklet are incorrect, and this will be republished with the correct fee structure.

## **Fantastic Start with Attendance**

The strong links between high level student attendance and high level academic success have been well researched and documented. It is great to see a large number of our students who currently have 100% attendance at school. A special mention should go to Roll Call classes 7.4 and 7.1 who currently have the highest number of students with 100% attendance. Our Year 7 students are leading the way, with 89 students on 100% attendance, followed closely by Year 8. Students should be at school every day, unless they are sick or have approved leave for family emergencies. We ask parents, where possible, to make appointments for their children outside of school hours, to maximise learning time.

*Ellie Donovan*

**Deputy Principal**

## **PBS VALUES**

### **WEEK 5: RESPECT**

Walk quietly in the corridors so that others can continue learning

### **WEEK 6: LEARNING**

Be on time for your next class

## Payments for School Fees/Excursions online

We have an online payment option for payments to the school for amounts owing for students, via a secure payment page hosted by Westpac. Payments can be made using either a Visa or MasterCard credit or debit card. The payment page is accessed from the front page of the school's website by selecting [\\$ Make a payment](#).

Items that can be paid include voluntary school contributions, subject contributions, excursions, sales to students and creative and practical arts activities (these include band, drama and dance). There is also a category called 'Other', to cover items not covered in the previous headings. Other can be used to make a complete payment of a school invoice.

When you access [\\$ Make a payment](#) you must enter:

- the students full name, class and reference number OR
- the students full name, and date of birth.

These details are entered each time you make a payment as student information is not held within the payment system. There is also the option to enter the Student Registration Number and Invoice number if you are aware of them, these are optional fields.

This is a secure payment system hosted by Westpac to ensure that your credit/debit card details are captured in a secure manner, these details are not passed back to the school.

You have the ability to check and change any details of the payment before the payment is processed. Receipts can be emailed and/or printed.

Details of the payments are passed daily to the school where they will be receipted against your child's account. As a receipt has been issued from the payment page a further receipt will not be issued by the school.

For any enquiries regarding the Online Payment process please contact the School Administration Office.

## SMS Messages to Parents

If you receive an SMS from Figtree High School informing you that your child has been marked absent on that day and you are replying back by SMS, could you please state your **child's full name and the year** they are in as it makes it difficult for us to identify the child with just a Christian name.

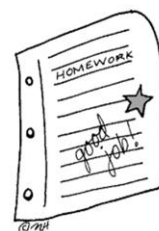
Thank you for co-operation  
Administration Office

## PARENT/STUDENT PHONE CALLS DURING THE SCHOOL DAY

We ask all parents to be aware that students are required to turn off their phones and put them in their bags during lessons. To ensure students comply with this rule, we request that urgent phone messages to students during lesson times are directed through the front office of the school. We are able to convey messages to students very quickly and to support them if need be should urgent action need to be taken. This allows us to ensure that both the individual student and the other students in the class can return to their learning very quickly. Your cooperation in this matter is much appreciated.

## FIGTREE HIGH SCHOOL – HOMEWORK CENTRE

Our Homework Centre is open every Monday (starting from Week 3 Monday 9<sup>th</sup> February) from 3.00pm-4.00pm in the School Library. All students are welcome to attend and a teacher will be present to supervise students. Light refreshments are also provided. So, take advantage of this great opportunity to access resources, computers and the internet in a quiet environment.



### **YEAR 7 - VACCINATION PROGRAM – 2015**

This year our school is participating in the NSW Adolescent Vaccination Program.

This program will offer **Varicella** vaccine (chickenpox) to any students who have not had chickenpox or previous immunisation with the varicella vaccine. Vaccinations will also be offered against **HPV (Cervical Cancer) Triple antigen booster (Diphtheria, Tetanus, Pertussis)** for all Year 7 students.

**Eligible students have received a consent form for the vaccinations and must complete and return the signed consent form to the school to be vaccinated.**

**A team of specially trained registered nurses will be visiting our school to administer the vaccine on –**

**Monday 2nd March - First Dose – HPV (cervical cancer) vaccine -girls and boys.**  
- **Diphtheria/ Tetanus/ Pertussis (whooping cough) booster.**

**Monday 27<sup>th</sup> April - Second Dose – HPV vaccine – girls and boys.**  
**Catch up for any students who missed first dose of HPV.**  
**Varicella vaccine – (single dose)**

**Monday 19<sup>th</sup> October - Third dose - HPV vaccine – girls and boys.**  
**Catch up for HPV, Diphtheria/Tetanus/Pertussis for any students who missed previous vaccination.**

After the students have been vaccinated they will be given a record of vaccination to take home so that you can keep their immunisation records up to date.

If you would like your child to be vaccinated, please complete the Consent forms and return them to the school immediately.

### **Year 11/12 Vaccination Program**

On the **27<sup>th</sup> of April** a vaccination clinic will be set up in the school library for any students in Years 11 or 12 who have not previously had the MMR (Measles/Mumps/Rubella) vaccine. This is a **catch up only** for students in Year 11 and 12 that missed their doses usually given at ages 1 and 4 years old. This is **not a booster** dose. If you would like your child to be vaccinated, please complete the consent form they have received and return it to the school immediately.

If you have any questions regarding the vaccination program please contact the **Public Health Unit (42216700)** or **Kirsten Borst at Figtree High School ( 42712787).**



## Swimming Carnival

On Monday the 9<sup>th</sup> February we had our whole school swimming carnival at Western Suburbs Pool -Unanderra. The students that came along on the day were well behaved and we had a large number of competitors.

The winning house for the day was **Black** narrowly defeating Red by 25 points.

The Age Champions for the day were

	Girls	Boys
12 Years	Alyssa Parks	Martin Patrone-Hill
13 Years	Abby Murada	Hamish Weine
14 Years	Molly McNair	Jason Vugrek
15 Years	Meghan Fox	Jayden Brown
16 Years	Teghan Barklay	Ben Hubert
	Jade Scanlen	
17+ Years	Caitlin Smith	Alex Costello

There were also **two records broken** on the day by **Caitlin Smith**. The 50m butterfly with a time of 32.08 and the 200m freestyle with a time of 2.18.85. Congratulations Caitlin!

Our swimmers will now progress to the Zone Carnival which will be held at Corrimal Pool on the 20<sup>th</sup> February. We wish all our swimmers the best of luck.

Below are some photos of the day. A big thankyou to Cassandra Harding for taking the great action shots.



## Parent Parking Concerns

The Figtree High School **staff car parks are not to be used by parents to drop off or pick up students**. The car park drive ways, including the Figtree Anglican Church driveway, should not be used to complete three point turns. At the end of the school day, these driveways are extremely busy exit points. Staff car parks are not pedestrian access points for parents or students. The school has two pedestrian paths on Gibsons Rd for this purpose. We seek the support of our parents to ensure our car park spaces are safe for our staff and students to ensure they are incident free.

The school has a rear exit gate that enables students to walk north towards O'Briens Road. This road is an ideal pick up point for parents as there is less traffic from Figtree Public School and ample space to stop or park to collect your child after school.

The Figtree Anglican Church front carpark area should not be used by parents to drop off and collect students. This car park is for the staff and visitors of the Figtree Anglican Church. Your cooperation in parking elsewhere is appreciated.

### CANTEEN NEWS

Welcome back to all our students and especially our new Year 7 students.

We would like to extend an invitation to all the new parents to Figtree High School to volunteer at our wonderful and friendly canteen. If you can spare an hour per week or a couple of hours per month to help serve the students at Lunch 1 (11.22 to 11.52 M,T, W & F or 11.34 to 12.04 Thurs) we would really appreciate it. The more volunteers we have each day, the quicker the students get served and have time to eat their lunch.

Please phone Narelle on 4271 2787 (preferably not at lunch times)

## Student Representative Council (SRC) Leadership Day 2015

The Student Representative Council for 2015 will be involved in a **Leadership Training Day** at the University of Wollongong on **Tuesday 24<sup>th</sup> February**. The aim of the day will be to co-ordinate and plan our SRC activities for the year ahead, create some team harmony and to hear from current community leaders in regards to leadership techniques and tips. The students will need to meet at the Northfields Ave bus stop by 9.00am where our Year 12 Captains will guide them to building 24 and room 103 for the day's activities. Morning tea and lunch will be provided on the day. Students will only need to bring a pen/or laptop if they own one.

**The SRC Induction ceremony** will be held on **Monday the 23<sup>rd</sup> of February** in the school auditorium. Parents/Grandparents/Friends of students receiving their SRC badges are most welcome to attend the ceremony which will commence at 9.45am.

Mr Sargent-Wilson

## School Photos – February

This year our school photos will again be taken over two days in February, Friday 20<sup>th</sup> for students in Years 10, 11 and 12 and Friday 27<sup>th</sup> for students in Years 7, 8 and 9, along with students who were absent when their photos were taken on 20/2. Students are reminded that full school uniform should be worn for school photos. If students need assistance with uniform, they can see Mrs Borst or Mr Sargent-Wilson.

This year we have changed to a local company – MSP – Photography who have a range of packages available for you to purchase. An information brochure is included again in this newsletter.

Students have received their personalised photograph envelopes during roll call last week. Parents are reminded that the envelopes and payment is made on the photo day and envelopes should not be returned before the photo day. Students who are attending the Zone Swimming Carnival and miss their photos will be photographed on the following Friday 27/2/15. There will be a small window of opportunity for students who miss both photo days to have their photo taken at Figtree Public School on Wednesday 4<sup>th</sup> March from 8am – 9am.

## School Uniform

The school has two suppliers for our school uniform, Lowes at Westfield Figtree and Poppets Direct, who have a warehouse outlet in Montague Street, Fairy Meadow. Girls have the option to wear the school skirt or our approved school shorts during the summer months. The school uniform shorts for girls are mid-thigh length, plain navy, with no logos, pleats or cuffs and are the same length around the circumference of the leg. Our uniform suppliers have our girl's shorts in stock. We seek our parents support in ensuring that girls are wearing the approved school uniform shorts each day.

Junior Students    Senior Students



Our school canteen is selling the school caps for a price of \$12.

### Footwear

Our school uniform includes **ALL BLACK** fully enclosed **leather, leatherette or suede** shoes. This is to ensure that students meet the appropriate Work Health and Safety requirements while they are at school.

If you require assistance with uniforms, please contact Mrs Borst at the school.

# Ray White®

**Ray White Wollongong/Figtree**

69 Kembla Street, Wollongong 2500

ph: 4229 8600 fax 4225 9359

are the proud sponsors of the

**Ray White Wollongong/Figtree  
Student Scholarships 2014 – 2018**

## Health Information – Head Lice

There have been some recently reported cases of students with head lice. As such, it is important for parents to take the time to check their child's hair carefully for any signs of head lice or eggs (nits) and treat their child if they have the symptoms, to minimise the spread of head lice within the school community. Due to the lifecycle of head lice, re-treating your child after 7 days is necessary.

Head lice infestations are a common occurrence, anyone can catch head lice regardless of their age, sex, or how clean their hair is. Head lice move from one person's head to another via hair. They do not survive long when they are off a human head and head lice do not live on furniture, hats, bedding or carpet. Head lice have built up some resistance to head lice treatments.

The effective treatment of head lice involves daily combing of white hair conditioner using a fine tooth comb. Chemical treatments are available from supermarkets and chemists, but they can be quite costly. Removing lice and eggs from the hair is necessary to break the lifecycle.

### Tips for parents in reducing the spread of head lice

It is best to choose a treatment that can be used over time. There is no single solution to eradication, only persistence.

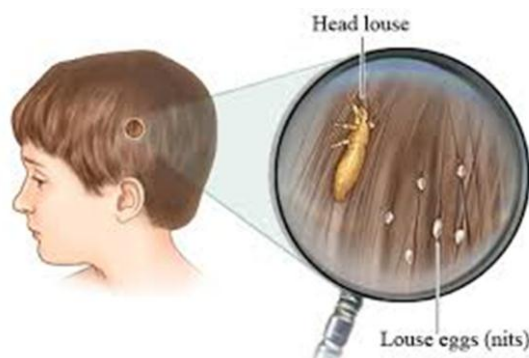
- regularly check your children's hair
- teach older children to check their own hair
- tie back and braid long hair
- keep a fine tooth head lice comb in the bathroom and encourage all family members to use it when they wash their hair.

This information was sourced from NSW Health on the following link:

<http://www.health.nsw.gov.au/environment/headlice/Pages/biology.aspx>

Further information on effective treatment can be found at

<http://www.schoolatoz.nsw.edu.au/en/wellbeing/health/removing-head-lice-and-nits>







# Figtree High School Expo Night 2015

6pm Wednesday 25<sup>th</sup> February 2015

Figtree High School Auditorium

Parents and Year 6 students who are interested in finding out what Figtree High has to offer in Year 7 2016 are invited to the annual FHS Expo Night

School Tours  
Faculty Displays  
Games  
Student guides  
Technology

For further information,  
please call or email us:  
02 4271 2787

figtree-  
h.school@det.nsw.edu.au





# say cheese

School Photo Day is  
**Friday 20<sup>th</sup> February 2015**  
**& Friday 27<sup>th</sup> February 2015**

*Have your child's school memories captured forever*

Please take time to read the relevant information on the MSP Photography payment envelopes and remember these helpful points:



- Don't seal envelopes inside each other. You can pay for more than one student in one envelope however each student needs to have their own envelope on photo day
- Sibling & Friends Photo Envelopes are available at the school office upon request. *Online Ordering is NOT available for Sibling & Friends Photo Packs.*
- Please enclose correct money as no change is given.
- Return your individual photo envelopes on photo day. Present the envelope directly to the MSP photographer, sending it to school earlier will only create more work for your school administration staff.

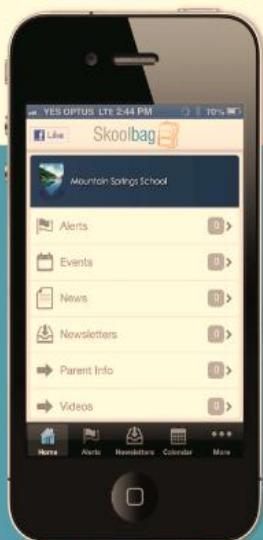
**For any enquiries, please feel free to contact us**

**e** [illawarra@msp.com.au](mailto:illawarra@msp.com.au)

**p** +61 2 42613009

**f** +61 2 42613008

[www.msp.com.au](http://www.msp.com.au)



# Skoolbag



FOR



Smartphone school to parent communication

Skoolbag is a mobile App for your school to communicate directly to both parents and students. It works through both smart phones and smart devices (such as iPads and Android Tablets). Ideal for:

- > School, free push notification alerts
- > School events
- > School newsletters
- > School documents
- > School RSS feeds
- > School social media (Facebook, Twitter)

Skoolbag delivers school notices directly to parents and students



## How To Install Skoolbag On Your Smartphone

### iPhone & iPad Users

1. Click the "App Store" icon on your Apple device.
2. Type your school name in the search, using suburb name will help.
3. If iPhone, you will see your school appear, click "Free" then "install".
4. If iPad, change the drop list to "iPhone Apps", your school will then be visible, click "Free" then "install".
5. When installed click "Open"
6. Select "OK" to receive push notifications, when asked.
7. Click the "More" button on the bottom right of the App, then "Setup".
8. Toggle on the Push Categories that are applicable for you.



### Android Users

You must first have signed up with a Google Account before installing the app.

1. Click the "Play Store" button on your Android Device
2. Click the magnifying glass icon at the top and type in your school name, using suburb name will help.
3. Click the school name when it appears in the search.
4. Click the "Install" button.
5. Click "Accept" for various permissions (please note, we do not modify any of your personal data on your device).
6. Click "Open" when installed.
7. Click the "More" button on the bottom right of the App, then "Setup".
8. Toggle on the Push Categories that are applicable for you.



Google play

Don't forget to like us on Facebook! 

Find out more at [www.skoolbag.com.au](http://www.skoolbag.com.au)

Skoolbag delivers school notices directly to parents and students





# NOTIFICATIONS

## GIVE HOCKEY A TRY

**Junior Gala Day, 21<sup>st</sup> Feb**

Always wanted to try hockey??

Come along to Figderra Hockey Clubs fun day & give it a go. Meet some other kids & see if you would like to play with our club this season.

Ages 9-18

10.00 - 11.30 am

ICU Hockey Stadium

Waples Rd, Unanderra

**Bring:** mouthguard, shin pads  
friends & a stick (if you have one)

**Supplied:** BBQ & Drinks, stick if you need one



[www.facebook.com/FigderraHockey](http://www.facebook.com/FigderraHockey)

**Call Jane: 0422764229 or Sherree: 0421985421**

**Foster kids need more  
people like you.**

**FREE information session  
5pm, Thursday 26 February**



**Great kids come from good families.  
Please help.**

Could your family include a foster child every second weekend? We urgently need respite foster carers to care for children on a regular short term basis. Come along to one a **FREE** foster care information session on **Thursday 26th February at Dapto Ribbonwood Centre**, Princes Highway, Dapto from 5 to 6pm.

To reserve your place  
CALL **1300 130 585**.

 **WILLIAM CAMPBELL  
FOUNDATION**  
[www.wcfoundation.org.au](http://www.wcfoundation.org.au)  
Giving children hope and a future.



## Rotary Club of Wollongong Trivia Night

**\$20 - \$10 Children**

**Friday 27th February**

**6:30pm for 7pm Start**

**City Diggers Wollongong**

Cnr Church & Burelli Streets, Wollongong

*Light finger food included  
Light and main meals available from the Bistro  
Meals can be brought into Auditorium*

**Purchase Tickets online at**

**[www.trybooking.com/118127](http://www.trybooking.com/118127)**

**or**

**at the door on the night**

**Inquiries - call Rod - 0418 421 493**

**RSVP - essential by 22 February 2015**

Parking is available at \$5 - David Jones Car Park  
next door to midnight.  
Refundable on purchase of a main meal at the Club Bistro



**Proceeds of funds raised  
to go to Rotary Youth  
Programs including  
National Youth Science  
Forum**





**BASKETBALL**  
**ILLAWARRA**

**CONTACT DETAILS**

PO Box 7141, GWYNNEVILLE 2500

Phone: (02) 4225 9999

Fax: (02) 4226 3596

Email: [admin@snakepit.com.au](mailto:admin@snakepit.com.au)

Web: [www.snakepit.com.au](http://www.snakepit.com.au)

# **HIGH SCHOOL BASKETBALL** **Beaton Park - SNAKEPIT**

**24th APRIL -**  
**18th SEPTEMBER 2015**  
**(TERMS 2 & 3)**



## **FRIDAYS 4:30pm onwards**

**BOYS & GIRLS COMPETITIONS**  
**JUNIORS—YEARS 7 & 8**  
**SENIORS—YEARS 9, 10, 11 & 12**



BNSW registration - \$80 per player

COMPETITION FEES—**\$142.50** (team of 8)  
**\$114** (team of 10)



Established in 1986

**Essential Employment and Training (EET) offer the following services for people with disability, illness and injury:**

- Disability Employment Services (DES)
- Youth Employment Program (YEP)
- Transition to Work (TTW)
- Community Participation (CP)
- Individual Funding Packages (IF)

**EET's Individual Funding packages:**

- We use person centred approaches to respond to your needs
  - We are experts at linking people with social networks in the broader community
  - We offer a flexible service delivery
  - We offer a range of activities, including: social, sporting, recreational and employment
  - We also MANAGE your Individual Funding Package for you
  - If we don't offer an activity, we will arrange it for you
- Just Ask!

**47 Burelli Street, WOLLONGONG**  
**4227 3111 or 1800 243 513**  
**[info@eetgroup.com.au](mailto:info@eetgroup.com.au)**  
**[www.eetgroup.com.au](http://www.eetgroup.com.au)**

Not for Profit Organisation

# L<sup>EARNER</sup> LOGBOOK RUN

## DO YOU HAVE YOUR L'S?

### Want to get more hours for your log book?

An opportunity for you and your supervisor to experience a variety of driving conditions including Police RBT, Speed Check and Driver Reviver.

**Daylight -  
Sunday Runs are held at:  
Shellharbour & Kiama  
10.00am - 12.30pm  
Wollongong  
9.30am - 12.00pm**

**Nighttime -  
Tuesday Runs are held at  
6.00pm - 8.30pm in  
Shellharbour & Kiama  
only.**

**All Learner Drivers Must  
Have 40 Or More Log  
Book Hours**



2014	SUNDAY 15	JUNE	SHELLHARBOUR CITY COUNCIL KIAMA MUNICIPAL COUNCIL
	TUESDAY 15 NIGHT DRIVE	JULY	SHELLHARBOUR CITY COUNCIL KIAMA MUNICIPAL COUNCIL
	SUNDAY 3	AUGUST	WOLLONGONG CITY COUNCIL
	SUNDAY 28	SEPTEMBER	SHELLHARBOUR CITY COUNCIL KIAMA MUNICIPAL COUNCIL
	SUNDAY 2	NOVEMBER	WOLLONGONG CITY COUNCIL
2015	SUNDAY 15	FEBRUARY	WOLLONGONG CITY COUNCIL
	SUNDAY 15	MARCH	SHELLHARBOUR CITY COUNCIL KIAMA MUNICIPAL COUNCIL
	TUESDAY 14 NIGHT DRIVE	APRIL	SHELLHARBOUR CITY COUNCIL KIAMA MUNICIPAL COUNCIL
	SUNDAY 17	MAY	WOLLONGONG CITY COUNCIL
	SUNDAY 14	JUNE	SHELLHARBOUR CITY COUNCIL KIAMA MUNICIPAL COUNCIL

### BOOKINGS ARE ESSENTIAL

Please contact Council for a suitable Learner Log Book Run:

**WOLLONGONG CITY COUNCIL**  
Phone: 4227 7261  
Email: [rso@wollongong.nsw.gov.au](mailto:rso@wollongong.nsw.gov.au)

**SHELLHARBOUR CITY COUNCIL,  
KIAMA MUNICIPAL COUNCIL**  
Phone: 4221 6124 or email  
[jenny.davies@shellharbour.nsw.gov.au](mailto:jenny.davies@shellharbour.nsw.gov.au)

An initiative of  
Wollongong,  
Shellharbour and  
Kiama Councils.  
Supported by Lake  
Illawarra and Bulli  
PCYC, NSW Police,  
Illawarra Road  
Safety Group and  
the RMS.







# LEARN SAFE

## FREE WORKSHOP FOR PARENTS AND SUPERVISORS OF LEARNER DRIVERS

2014	MONDAY 21	JULY	SHELLHARBOUR CITY COUNCIL
	WEDNESDAY 20	AUGUST	KIAMA MUNICIPAL COUNCIL
	TUESDAY 9	SEPTEMBER	WOLLONGONG CITY COUNCIL
	WEDNESDAY 15	OCTOBER	KIAMA MUNICIPAL COUNCIL
	MONDAY 10	NOVEMBER	SHELLHARBOUR CITY COUNCIL
	TUESDAY 2	DECEMBER	WOLLONGONG CITY COUNCIL
2015	MONDAY 16	FEBRUARY	SHELLHARBOUR CITY COUNCIL
	TUESDAY 17	MARCH	WOLLONGONG CITY COUNCIL
	WEDNESDAY 22	APRIL	KIAMA MUNICIPAL COUNCIL
	MONDAY 25	MAY	SHELLHARBOUR CITY COUNCIL
	TUESDAY 9	JUNE	WOLLONGONG CITY COUNCIL

### WORKSHOPS ARE HELD AT WOLLONGONG, SHELLHARBOUR AND KIAMA COUNCILS

*To help you with practical advice about:*

- Supervising learner drivers
- Completing the learner driver log book
- Providing on-road driving practice and
- L and P Plate licence laws

An initiative of Wollongong, Shellharbour and Kiama Councils

### BOOKINGS ARE ESSENTIAL

Workshops are held from 6.00pm - 8.00pm

Please contact Council for a suitable Workshop

#### WOLLONGONG CITY COUNCIL

Phone: 4227 7261

Email: [rso@wollongong.nsw.gov.au](mailto:rso@wollongong.nsw.gov.au)

#### SHELLHARBOUR CITY COUNCIL

Phone: 4221 6124

or email

[jenny.davies@shellharbour.nsw.gov.au](mailto:jenny.davies@shellharbour.nsw.gov.au)

#### KIAMA MUNICIPAL COUNCIL

Phone: 4232 0444

Email: [council@kiama.nsw.gov.au](mailto:council@kiama.nsw.gov.au)

